



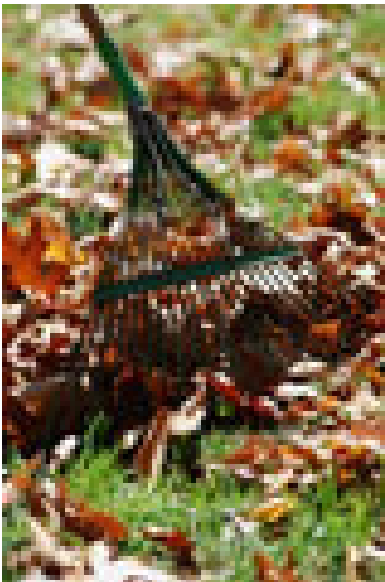
LEAF MAINTENANCE

DID YOU KNOW ?

Fallen leaves contribute considerable amounts of phosphorous to our waterways and **one pound of phosphorus can grow up to 500 pounds of algae.**

What Can You Do?

- Mulch leaves in place by making several passes with a power mower. The shredded leaves will provide nutrients back to your lawn;
- Compost your leaves into mulch to place around your vegetables and flowers;
- Spread leaves in garden beds or under shrubs;
- Follow your community leaf collection policies and schedule;
- Learn about your community yard waste disposal practices;
- Put a tarp over leaf piles between pick-up times to prevent them from blowing away;
- Clean leaves and debris from the gutters and storm sewer outlets



Composting

Cold Composting – requires less maintenance and can take up to 2 years to complete

Hot Composting – requires regular maintenance such as turning and watering. Compost can be reached in 1-3 months

Layer or mix roughly equal amounts of high-nitrogen “Greens” (wet and soft material – grass clippings) and high-carbon “Browns” (dry and woody – dead leaves) to create ideal conditions for your compost pile

Check with your local municipality regarding any regulations or programs about composting



This information is provided for use and dissemination by NEWSC. Contact us with any questions.

920-722-2151 (phone)

www.newsc.org

P.O. Box 1861, Appleton, WI 54912